

STANDARD MOUNTING KIT ASSEMBLY INSTRUCTIONS.

3 POINT MOUNTING KITS #394 & #395

STEP #1 Check location of the Cab Rack (CR) on frame and make sure the frame is clear of obstructions.

STEP #2 Check crossmember locations to determine if kit location can be achieved. (see diagram)

STEP #3 Set CR on tractor and center CR on the frame.

STEP #4 Locate CR with approximately 2" of clearance between the cab and the back of the CR upright.

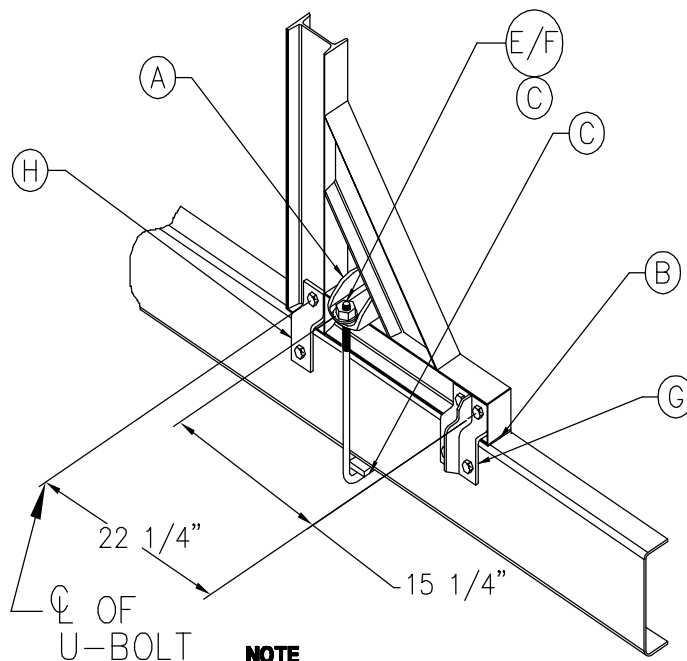
STEP #5 Install the 3"x 30" rubber pad between CR foot and truck frame.

STEP #6 Install the two U-Bolts with moon brackets in the proper location with washer and nut loose. Place the 2" x 3-1/2" steel pad between the truck frame and the bottom of the U-Bolt. (see diagram)

STEP #7 Locate mounting brackets in proper location and drill holes for 5/8-18 x 2" bolts (bolts not supplied).

STEP #8 Tighten all nuts by hand, then check CR and U-Bolt for proper location.

STEP #9 Torque the U-Bolt nuts to 150 ft/lbs dry and the grade 8 bolt nuts to 240 ft/lbs dry.



NOTE

Must be installed with grade 8 bolts, nuts and hardened washers. (not included)

H	2	87-2580-006	ASSY, PROBLEM SOLVER HALF	
G	2	86-2580-005-1	ASSY, FULL PROBLEM SOLVER	
F	REF	11-0131	BOLT, SQUARE-U - 21" ZINC	(IF 395 2 PCS.)
E	REF	11-0127	BOLT, SQUARE-U - 17" ZINC	(IF 394 2 PCS.)
D	1	11-1505	KIT, 5/8" SAE FW & NYLON	
C	2	32-3000	BAR, ZINC - 1/2" X 2" X 3-1/2"	
B	2	79-5515	PAD, RED RUBBER - CR - 3" X 30"	
A	2	A87-2553-002	BRACKET, TIE DOWN - MOON	
ITEM	QTY	PART NUMBER	DESCRIPTION	MATERIAL/CUT
REVISION	DATE	DESCRIPTION	BY	SCALE NONE
			DWN BY KULBERG	
			REF • 394/395	
			WEIGHT	
			DATE 7-1-16	DWG D96-2580-020
			SHT 1 OF 1	REV A

UNLESS OTHERWISE SPECIFIED:
 DIMENSIONS ARE IN INCHES. TOLERANCES ARE:
 FRACTIONS: ±1/16"
 DECIMAL: 0.001 ±0.003 0.000 ±0.010
 ANGLES: ±1°
 THIS DRAWING AND THE HEREIN SPECIFICATIONS ARE THE PROPERTY OF MERRITT ALUMINUM PRODUCTS CO. AND SHALL NOT BE REPRODUCED, COPIED, OR USED IN WHOLE OR IN PART AS THE BASIS FOR THE DESIGN, MANUFACTURE, OR THE SALE OF ITEMS WITHOUT THE WRITTEN PERMISSION OF MERRITT ALUMINUM PRODUCTS CO.

WARNINGS

This cab rack is NOT A SAFETY DEVICE and will NOT PREVENT SERIOUS INJURY or DEATH from forward shifting cargo as a result of an accident or improper securement.

To prevent SERIOUS INJURY or DEATH:

ALWAYS secure your cargo in compliance with FMCSA/DOT regulations.

See 49 CFR 393 for requirements. Be aware of any applicable state motor carrier regulations.

NEVER consider this rack to be part of your cargo securement system.

It is not a substitute for any cargo securement device and does not change any of the cargo securement requirements.

NEVER allow cargo to contact cab rack or use cab rack as a tie down point.

NEVER haul a log trailer or a pole trailer with this rack installed.

It is a misuse of the cab rack and is strictly prohibited by Merritt Aluminum Products Company.

INSPECT cab rack weekly for cracks or damage. If damaged, replace rack.

CHECK torque of all bolts every 90 days.

Bolts on Moon Brackets 150 ft.-lb. dry.

Use cab rack for storing chains and equipment.

For more information, visit www.merrittproducts.com

ONLY use Merritt Mounting Kit.

If a Merritt Mounting Kit is not used to install a Merritt cab rack, then your cab rack warranty will be void.

WARNING NEVER reuse a mounting kit.

ALWAYS read and follow the Merritt Mounting Kit Assembly Instructions to insure proper installation.

If you do not have the proper equipment or skill to install the cab rack, take your vehicle to an authorized dealer.

RELOCATION of vehicle components or frame modifications are the sole responsibility of the installer.

Questions regarding any alterations should be directed to the vehicle manufacturer.