

STANDARD MOUNTING KIT ASSEMBLY INSTRUCTIONS.

DELUXE KIT Designed for those hard to fit custom installations.

This kit provides the best of both Dyna Clamp and the Problem Solver kits. It allows the use of U-bolts with fewer holes drilled in frame.

DELUXE KIT MOUNTING KIT #327

STEP #1 Check location of Cab Rack (CR) on frame and make sure the frame is clear of obstructions.

STEP #2 Check cross member locations to determine if kit location can be achieved (see diagram).

STEP #3 Set CR on tractor and center CR on the frame.

STEP #4 locate the CR with approximately 2" of clearance between the cab and the back of the CR upright.

STEP #5 Install the 3" x 30" rubber pad between the CR foot and the truck frame.

STEP #6 Install U-Bolts with moon brackets in the proper location (see diagram) with washer and nut loose. place the 2" x 3-1/2" steel pad between the truck frame and the bottom of the U-bolt.

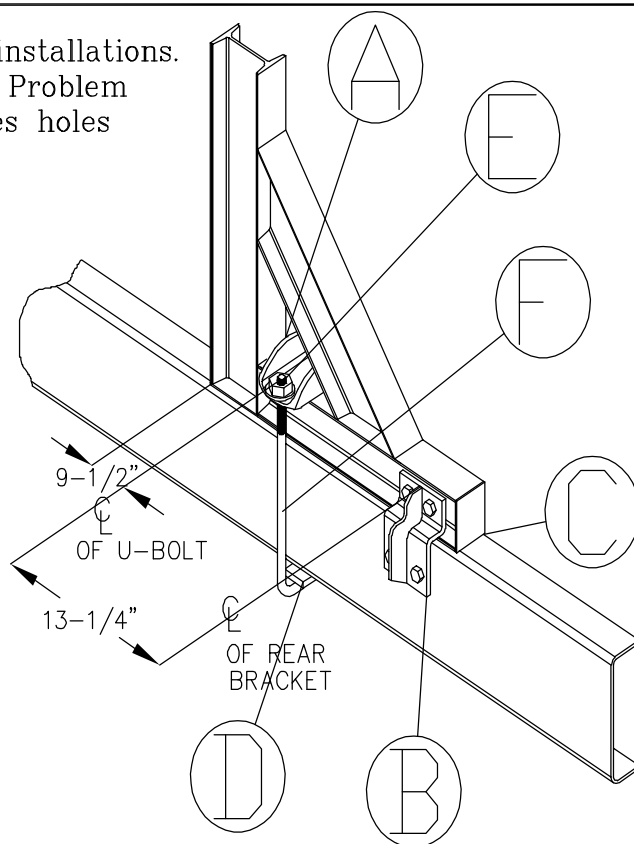
STEP #7 Clamp the four bolt bracket on the CR foot in the proper location. (see diagram)

STEP #8 Drill 5/8" holes in CR foot using the bracket as a guide bolts, washers and nuts placing the washer on aluminum side. Hand tighten nuts and bolts.

STEP #9 Drill 5/8" holes in truck frame using the bracket as a guide and install bolts, washers and nuts - placing the washer on the frame side and hand tighten.

STEP #10 Torque grade 8 bolts and nylon insert locknuts on rear bracket to 240 ft lbs. dry. Torque U-Bolt nuts to 150 ft. lbs. dry. Maintain torque and check every 90 days or less.

STEP #11 Remove all clamps.



ITEM	QTY	PART NUMBER	DESCRIPTION	MATERIAL/CUT
F	2	11-0131	BOLT, SQUARE-U - 21" ZINC	
E	2	11-1505	KIT, 5/8" SAE FW & NLN	
D	2	32-3000	BAR, ZINC - 1/2" X 2" X 3-1/2"	
C	2	79-5515	PAD, RED RUBBER - CAB RACK - 3" X 30"	
B	2	A86-2580-005	BRACKET, MOUNTING-FULL PROBLEM SOLVER	
A	2	A87-2553-002	BRACKET, TIE DOWN - MOON	

REVISION	DATE	DESCRIPTION	BY	SCALE	NONE	REF	327	WEIGHT	DATE	7-1-16	DWG	D96-2580-221	SHT	1 OF 1	REV	B
----------	------	-------------	----	-------	------	-----	-----	--------	------	--------	-----	--------------	-----	--------	-----	---

NOTE:

must be installed with 5/8" grade 8 bolts, nuts and hardened washers. (not included)

UNLESS OTHERWISE SPECIFIED:
DIMENSIONS ARE IN INCHES. TOLERANCES ARE:
FRACTIONS: ±1/16"
DECIMAL: 0.XXX = ±0.03 0.XXX = ±0.010
ANGLES: ±1°
THIS DRAWING AND THE HEREIN SPECIFICATIONS ARE THE PROPERTY OF MERRITT ALUMINUM PRODUCTS CO. AND SHALL NOT BE REPRODUCED, COPIED, OR USED IN WHOLE OR IN PART AS THE BASIS FOR THE DESIGN, MANUFACTURE, OR THE SALE OF ITEMS WITHOUT THE WRITTEN PERMISSION OF MERRITT ALUMINUM PRODUCTS CO.

WARNINGS

This cab rack is **NOT A SAFETY DEVICE** and will **NOT PREVENT SERIOUS INJURY or DEATH** from forward shifting cargo as a result of an accident or improper securement.

To prevent SERIOUS INJURY or DEATH:

ALWAYS secure your cargo in compliance with FMCSA/DOT regulations.

See 49 CFR 393 for requirements. Be aware of any applicable state motor carrier regulations.

NEVER consider this rack to be part of your cargo securement system.

It is not a substitute for any cargo securement device and does not change any of the cargo securement requirements.

NEVER allow cargo to contact cab rack or use cab rack as a tie down point.

NEVER haul a log trailer or a pole trailer with this rack installed.

It is a misuse of the cab rack and is strictly prohibited by Merritt Aluminum Products Company.

INSPECT cab rack weekly for cracks or damage. If damaged, replace rack.

CHECK torque of all bolts every 90 days.

Bolts on Moon Brackets 150 ft.-lb. dry.

Use cab rack for storing chains and equipment.

For more information, visit www.merrittproducts.com

ONLY use Merritt Mounting Kit.

If a Merritt Mounting Kit is not used to install a Merritt cab rack, then your cab rack warranty will be void.

WARNING NEVER reuse a mounting kit.

ALWAYS read and follow the Merritt Mounting Kit Assembly Instructions to insure proper installation.

If you do not have the proper equipment or skill to install the cab rack, take your vehicle to an authorized dealer.

RELOCATION of vehicle components or frame modifications are the sole responsibility of the installer.

Questions regarding any alterations should be directed to the vehicle manufacturer.