

# STANDARD MOUNTING KIT ASSEMBLY INSTRUCTIONS.

**DYNA-CLAMP** Designed for most installations.  
 To be used when the frame is clear from obstruction.

## DYNA-CLAMP MOUNTING KIT #324

**STEP #1** Check location of Cab Rack (CR) on frame and make sure the frame is clear of obstructions.

**STEP #2** Check crossmember locations to determine if kit location can be achieved. (see diagram)

**STEP #3** Set CR on tractor and center CR on the frame.

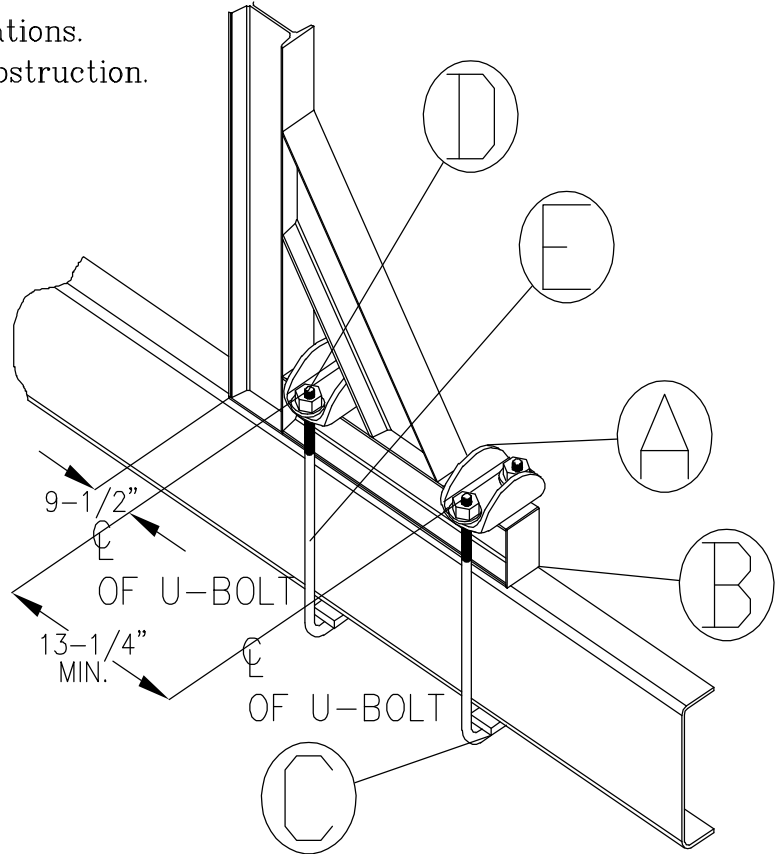
**STEP #4** Locate CR with approximately 2" of clearance between the cab and the back of the CR upright.

**STEP #5** Install the 3" x 30" rubber pad between CR foot and truck frame.

**STEP #6** Install all four U-Bolts with moon brackets in the proper location with washer and nut loose. Place the 2" x 3-1/2" steel pad between the truck frame and the bottom of the U-Bolt. (see diagram)

**STEP #7** Tighten nuts by hand, then check CR and U-Bolt for proper location.

**STEP #8** Torque nuts to 150 ft lbs. dry. Maintain torque and check every 90 days or less.



E	4	11-0127	BOLT, SQUARE-U - 17" ZINC	
D	1	11-1500	KIT, NUT & WASHER - 5/8" CR	
C	4	32-3000	BAR, ZINC - 1/2" X 2" X 3-1/2"	
B	2	79-5515	PAD, RED RUBBER - CR - 3" X 30"	
A	4	A87-2553-002	BRACKET, TIE DOWN - MOON	
ITEM	QTY	PART NUMBER	DESCRIPTION	MATERIAL/CUT
REVISION	DATE	DESCRIPTION	BY	SCALE
			DWN BY RFH	
			REF # 324	
			WEIGHT	
			DATE 7-14-93	DWG D 96-2580-017
				SHT 1 OF 1

UNLESS OTHERWISE SPECIFIED:  
 DIMENSIONS ARE IN INCHES. TOLERANCES ARE:  
 FRACTIONS: ±1/16"  
 DECIMAL: 0.0X = ±0.03 0.00X = ±0.010  
 ANGLES: ±1°  
 THIS DRAWING AND THE HEREIN SPECIFICATIONS ARE THE PROPERTY OF MERRITT ALUMINUM PRODUCTS CO. AND SHALL NOT BE REPRODUCED, COPIED, OR USED IN WHOLE OR IN PART AS THE BASIS FOR THE DESIGN, MANUFACTURE, OR THE SALE OF ITEMS WITHOUT THE WRITTEN PERMISSION OF MERRITT ALUMINUM PRODUCTS CO.

**MERRITT**  
 ALUMINUM PRODUCTS  
 COMPANY  
 FORT LIPSON CO. 80612  
 800-525-0107  
 1011 14TH ST.  
 MERRITTPRODUCTS.COM

## WARNINGS

This cab rack is **NOT A SAFETY DEVICE** and will **NOT PREVENT SERIOUS INJURY or DEATH** from forward shifting cargo as a result of an accident or improper securement.

### To prevent SERIOUS INJURY or DEATH:

**ALWAYS** secure your cargo in compliance with FMCSA/DOT regulations. See 49 CFR 393 for requirements. Be aware of any applicable state motor carrier regulations.

**NEVER** consider this rack to be part of your cargo securement system. It is not a substitute for any cargo securement device and does not change any of the cargo securement requirements.

**NEVER** allow cargo to contact cab rack or use cab rack as a tie down point.

**NEVER** haul a log trailer or a pole trailer with this rack installed. It is a misuse of the cab rack and is strictly prohibited by Merritt Aluminum Products Company.

**INSPECT** cab rack weekly for cracks or damage. If damaged, replace rack.

**CHECK** torque of all bolts every 90 days. Bolts on Moon Brackets 150 ft.-lb. dry.

**Use** cab rack for storing chains and equipment. For more information, visit [www.merrittproducts.com](http://www.merrittproducts.com)

**ONLY** use Merritt Mounting Kit. If a Merritt Mounting Kit is not used to install a Merritt cab rack, then your cab rack warranty will be void.

**WARNING** NEVER reuse a mounting kit.

**ALWAYS** read and follow the Merritt Mounting Kit Assembly Instructions to insure proper installation. If you do not have the proper equipment or skill to install the cab rack, take your vehicle to an authorized dealer.

**RELOCATION** of vehicle components or frame modifications are the sole responsibility of the installer. Questions regarding any alterations should be directed to the vehicle manufacturer.