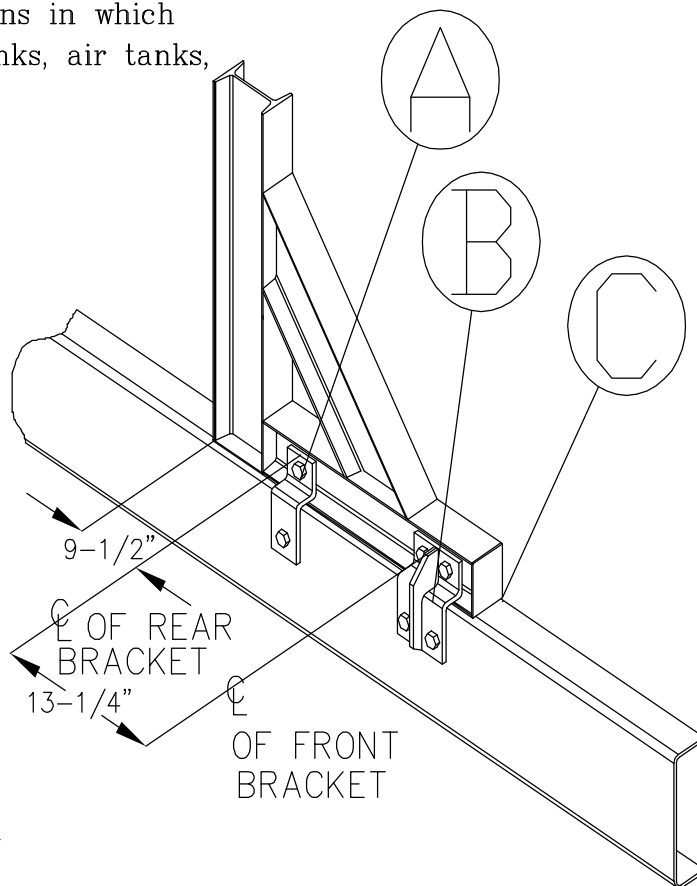


STANDARD MOUNTING KIT ASSEMBLY INSTRUCTIONS.

PROBLEM SOLVER KIT Designed for installations in which the frame is blocked from using U-bolts by fuel tanks, air tanks, hangers, brackets, crossmembers, etc.

MOUNTING KIT #323


- STEP #1** Check location of CAB Rack (CR) on frame and make sure the frame is clear of obstructions.
- STEP #2** Check crossmember locations to determine if kit location can be achieved (see diagram).
- STEP #3** Set CR on tractor and center CR on the frame.
- STEP #4** Locate CR with approximately 2" of clearance between the cab and the back of the CR foot.
- STEP #5** Install the 3" x 30" rubber pad between CR foot and truck frame.
- STEP #6** Clamp CR to the top frame flange.
- STEP #7** Clamp brackets on the CR foot in the proper locations. (see diagram)
- STEP #8** Drill 5/8" holes in CR foot using the bracket as a guide and install bolts, washers and nuts placing the washer on aluminum side. Hand tighten nuts and bolts.
- STEP #9** Drill 5/8" holes in truck frame using the bracket as a guide and install bolts, washers and nuts – placing the washer on the frame side and hand tighten.
- STEP #10** Torque nuts to 240 ft lbs. dry. Maintain torque and check every 90 days or less.
- STEP #11** Remove all clamps.



NOTE:
must be installed with 5/8" grade 8 bolts, nuts and hardened washers (not included).

UNLESS OTHERWISE SPECIFIED DIMENSIONS ARE IN INCHES. TOLERANCES ARE:
FRACTIONS: $\pm 1/16"$
DECIMAL: .XX = ± 0.0001 ± .010
ANGLES: $\pm 1^\circ$

THIS DRAWING AND THE HEREIN SPECIFICATIONS ARE THE PROPERTY OF MERRITT ALUMINUM PRODUCTS CO. AND SHALL NOT BE REPRODUCED, COPIED, OR USED IN WHOLE OR IN PART AS THE BASIS FOR THE DESIGN, MANUFACTURE, OR THE SALE OF ITEMS WITHOUT THE WRITTEN PERMISSION OF MERRITT ALUMINUM PRODUCTS CO.

C	2	79-5515	PAD, RED RUBBER - CR - 3" X 30"							
B	2	A86-2580-005	BRACKET, MOUNTING-F PROBLEM SOLVER							
A	2	A87-2580-006	BRACKET, MOUNTING-1/2 PROBLEM SOLVER							
ITEM		QTY.	PART NUMBER	DESCRIPTION		MATERIAL/CUT				
REVISION	LTR	DATE	DESCRIPTION		BY	SCALE NONE				
					DWN. BY	REF				
					REF.	323				
					WEIGHT					
					DATE	7/1/16				
						 MERRITT ALUMINUM PRODUCTS COMPANY	MERRITTPRODUCTS.COM 800-525-0100 1011 14TH ST FORT LUFKIN CO. 75641			
						TITLE	MOUNTING KIT, TIE-DOWN CAB RACK-PROBLEM SOLVER			
						DWG.	D 96-2580-100	SHT	1 OF 1	REV

MERRITT
ALUMINUM PRODUCTS
COMPANY
FORT LUPTON CO. 80412
800-625-0107
1011 14TH ST.

WARNINGS

This cab rack is **NOT A SAFETY DEVICE** and will **NOT PREVENT SERIOUS INJURY or DEATH** from forward shifting cargo as a result of an accident or improper securement.

To prevent SERIOUS INJURY or DEATH:

ALWAYS secure your cargo in compliance with FMCSA/DOT regulations. See 49 CFR 393 for requirements. Be aware of any applicable state motor carrier regulations.

NEVER consider this rack to be part of your cargo securement system. It is not a substitute for any cargo securement device and does not change any of the cargo securement requirements.

NEVER allow cargo to contact cab rack or use cab rack as a tie down point.

NEVER haul a log trailer or a pole trailer with this rack installed. It is a misuse of the cab rack and is strictly prohibited by Merritt Aluminum Products Company.

INSPECT cab rack weekly for cracks or damage. If damaged, replace rack.

CHECK torque of all bolts every 90 days.
Bolts on Moon Brackets 150 ft.-lb. dry.

Use cab rack for storing chains and equipment.
For more information, visit www.merrittproducts.com

ONLY use Merritt Mounting Kit.
If a Merritt Mounting Kit is not used to install a Merritt cab rack, then your cab rack warranty will be void.

WARNING NEVER reuse a mounting kit.

ALWAYS read and follow the Merritt Mounting Kit Assembly Instructions to insure proper installation.
If you do not have the proper equipment or skill to install the cab rack, take your vehicle to an authorized dealer.

RELOCATION of vehicle components or frame modifications are the sole responsibility of the installer.
Questions regarding any alterations should be directed to the vehicle manufacturer.