

- ▲ Utilize unused frame space and add additional storage areas.
- ▲ Heavy Duty designs on all storage boxes for a longer life.

- ▲ Aluminum for low weight, yet high strength.
- ▲ 18 Different models to make the most of your frame space.

- ▲ Saddle Boxes now available with optional internal chain rack or dividers.
- ▲ Saddle Boxes available with or without step options

ALUMINUM STORAGE BOXES



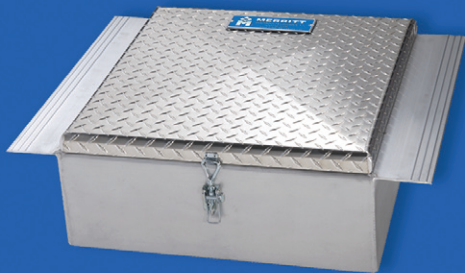
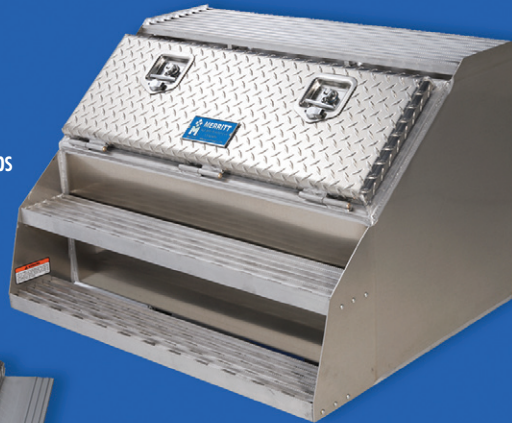
18" Saddle Box

12" Saddle Box
With Steps



Logger Box

36" Saddle Box With Steps



Between Frame Tool Box



Fold Away Handle

ALUMINUM STORAGE BOXES

ORDER INFORMATION

SMOOTH DOOR SADDLE BOXES*

Order #	Description/Dimensions H x D x L	Weight
		Lbs.
450	22 x 21 x 12	27
452	23 1/2 x 28 1/2 x 12 with step	34
460	22 x 21 x 18	32
462	23 1/2 x 28 1/2 x 18 with step	42
470	22 x 21 x 24	43
472	23 1/2 x 28 1/2 x 24 with step	56
480*	22 x 21 x 36	56
482*	23 1/2 x 28 1/2 x 36 with step	76
478	22 x 21 x 30	50
488	23 1/2 x 28 1/2 x 30 with step	67

*Model 117 or 118 Mounting Kit Required

DIAMOND PLATE DOOR SADDLE BOXES*

Order #	Description/Dimensions H x D x L	Weight
		Lbs.
451	22 x 21 x 12	27
453	23 1/2 x 28 1/2 x 12 with step	34
461	22 x 21 x 18	32
463	23 1/2 x 28 1/2 x 18 with step	43
471	22 x 21 x 24	44
473	23 1/2 x 28 1/2 x 24 with step	57
481*	22 x 21 x 36	57
483*	23 1/2 x 28 1/2 x 36 with step	77
477	22 x 21 x 30	52
487	23 1/2 x 28 1/2 x 30 with step	69

BETWEEN-THE-FRAME TOOL BOX

Order #	Description/Dimensions W" x H" x L"	Weight
		Lbs.
253	Dia. Plate Door with Mounting Kit 22 x 9 x 24	36

LOGGER BOX

Order #	Description/Dimensions H" x D" x L"	Weight
		Lbs.
229	Logger Box with Cross Frame Mount Kit 20 x 23 x 30	54

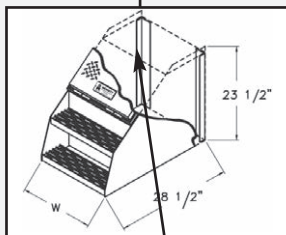
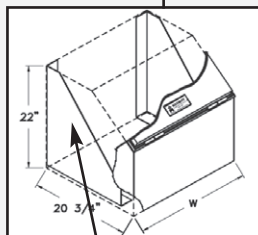
CHAIN RACK KITS

Order #	Description/Dimensions H x W x L	Weight
		Lbs.
486 - 1	Saddle Box Chain Rack, 12"	1
486 - 2	Saddle Box Chain Rack, 18"	1
486 - 3	Saddle Box Chain Rack, 24"	1
486 - 4	Saddle Box Chain Rack, 36"	2

SADDLE BOX DIVIDER

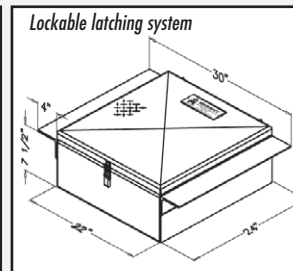
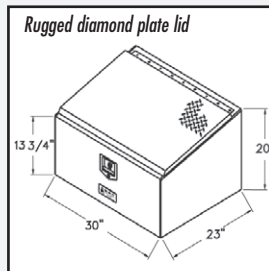
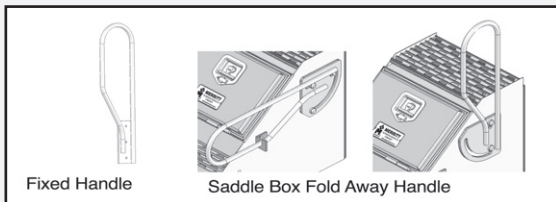
Order #	Description/Dimensions H x W x L	Weight
		Lbs.
485 - 1	Saddle Box Divider Set, 12"	2
485 - 2	Saddle Box Divider Set, 18"	2
485 - 3	Saddle Box Divider Set, 24"	2
485 - 4	Saddle Box Divider Set, 36"	2

SADDLE BOXES ▲ Extruded door frame with full perimeter automotive door seal for a water resistant closure ▲ Mounting Kit welded inside of all 12", 18", 24" and 30" Saddle Boxes. (Bolts Not Included) ▲ 36" Saddle box must be mounted using external brackets. (480 & 481 use 117, 482 & 483 use 118)



24", 30 and 36" saddle boxes are reinforced with side gussets to accommodate larger loads.

12" and 18" saddle boxes come standard with corner angles for a strong, secure mount.



BETWEEN THE FRAME TOOL BOX

Easy installation using clamps – no drilling of the frame.
Mounting Kit Included

LOGGER BOX Easy cross frame mounting kit is included. Can be side-frame mounted using the #118 mounting kit

SADDLE BOX FOLD AWAY HANDLE

Order #	Description	Shipping Wt.
3518	Folding Handle R/H	11 lbs
3519	Folding Handle L/H	11 lbs
3524	Fixed Handle R/H	5 lbs
3525	Fixed Handle L/H	5 lbs

(Attaches to any Merritt Saddle Box—3524 & 3525 can also attach to any Merritt frame steps)

Models and/or Specifications Subject to Change Without Notice.

F.O.B. - Fort Lupton CO, Sacramento CA, Salt Lake City UT, Dallas TX, Houston TX, Kansas City MO, Minneapolis MN, Atlanta GA, Pittsburgh PA, Calgary AB (CN), Toronto ON (CN)